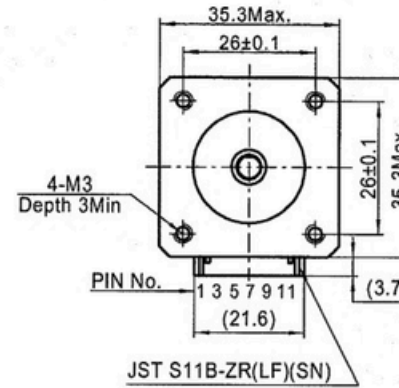
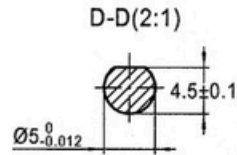
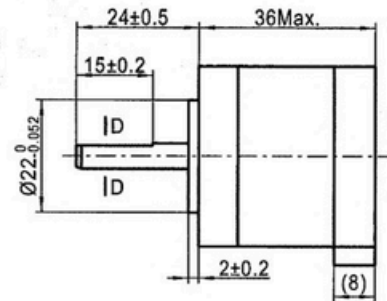
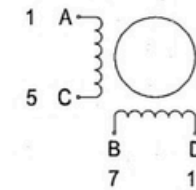


4611110015351



Wiring Diagram



Exciting Sequence vs. Direction of Rotation

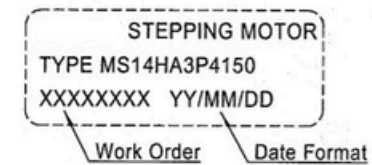
STEP	A	B	C	D	CW
1	+	+	-	-	↑
2	-	+	+	-	
3	-	-	+	+	
4	+	-	-	+	

Clockwise view from mounting side

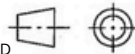
Specifications

1. Number of Phase	2
2. Step Angle	0.9°
3. Rated Voltage	2.42V DC
4. Rated Current	1.5Amp
5. Holding Torque	0.18N.m Typ.(Two phase on/rated current)
6. Phase Resistance	1.61ohm±10%(20°C)
7. Phase Inductance	2.2mH±20%(1kHz 1V rms)
8. Rotor Inertia	20g.cm ²
9. Motor Weight	210g
10. Insulation Class	B(130°C)

Label Detail



Unit: mm



FIRST ANGLE METHOD

Tolerance for linear and regular dimension without individual tolerance indications
GB/T 1804-m egv ISO 2768-1: m

Geometrical tolerance for features without individual tolerance indications
GB/T 1184-K egv ISO 2768-2: K

Approve		
Standard		
Technology		
Check		
Design		

PIVEXIN
TECHNOLOGY

REV.	REVISION RECORD	DATE
A	Original revision	2016.05.25